

Unit Export and Import



I can be contacted at E-mail address:- **web@g3tvu.co.uk**

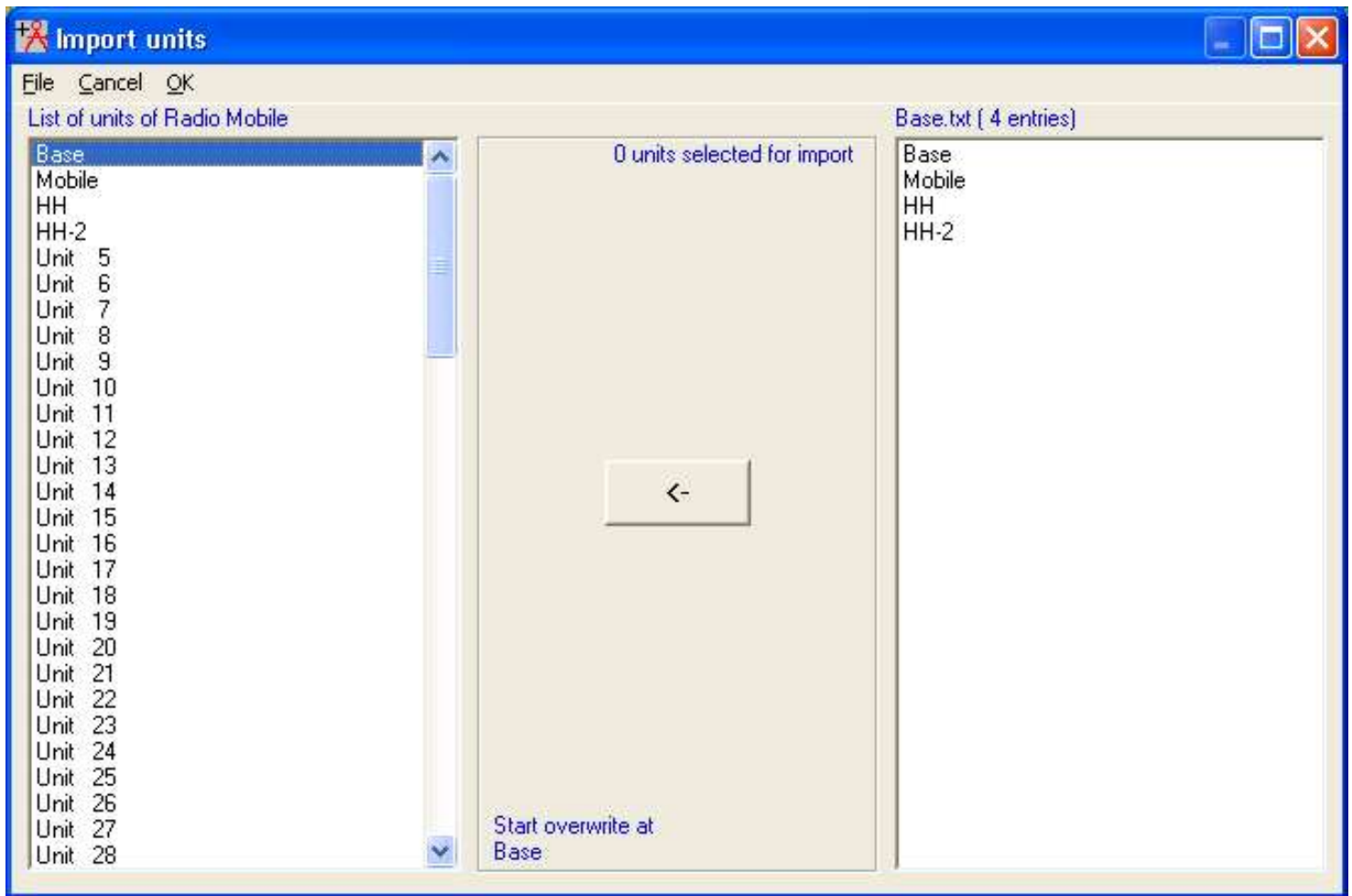
*Units may be exported from a Network and be saved as a Text file or a .kml file. The .kml file is capable of being Imported into **Google Earth** to be shown as named placemarks at the Unit locations. Similarly a Text file can be opened, and selected Units imported into a network. From V 8.1.8 it is now possible to import selected Units from a .kml file generated in Google Earth. This last capability allows placemarks to be located and placed accurately on the Google Earth aerial photographs, named, saved and then imported directly into Radio Mobile as Unit locations.*

*This picture from Google Earth shows the required locations of three mobile Units in my Base map area. Using **'File/save place as'**, the placemarks were saved as '3 mobile Units.klm'.*

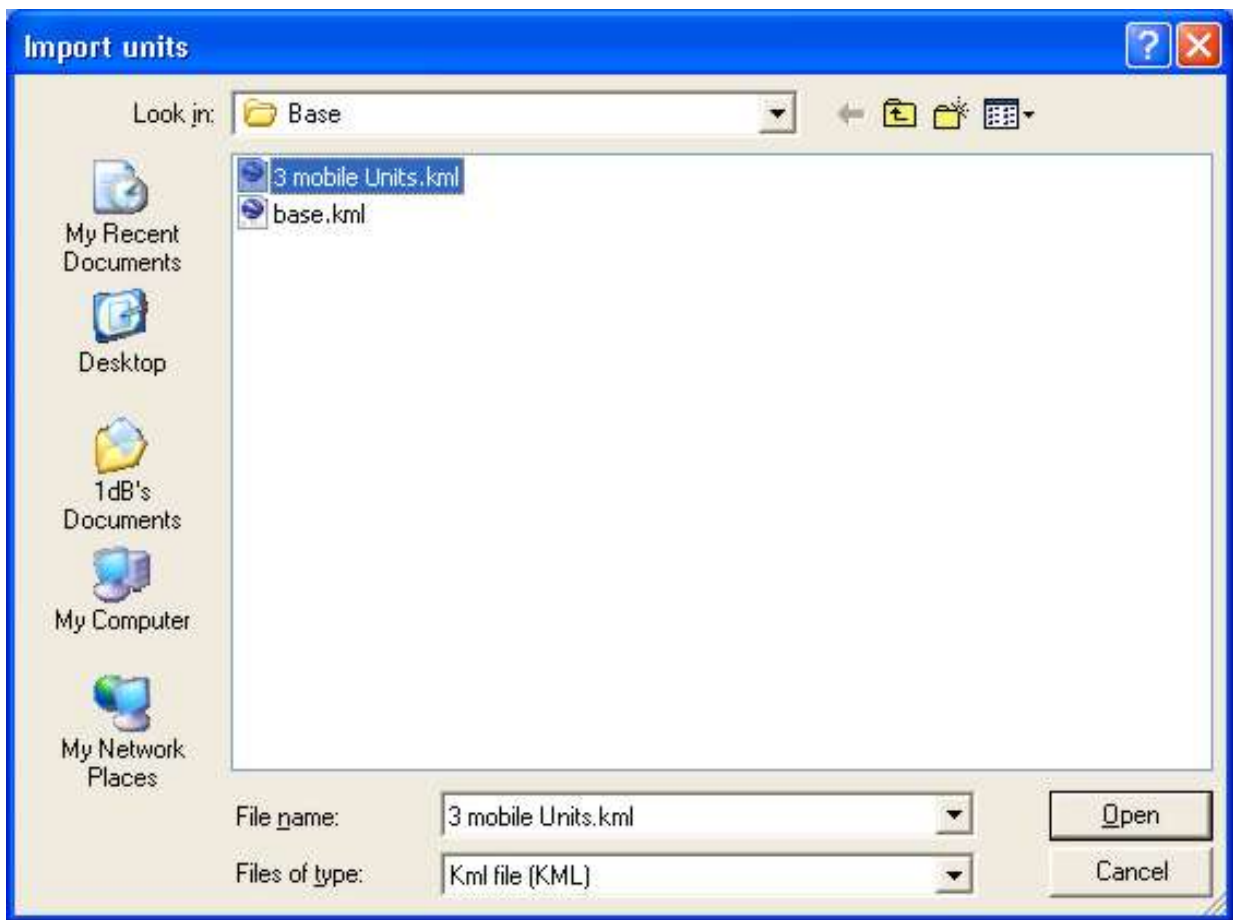
Make sure that after locating all the placemarks (which are placed in Google Earth's 'Temporary Places' folder), that you highlight this folder in the control area before 'save place as' is invoked, otherwise only the last placemark generated will be saved.



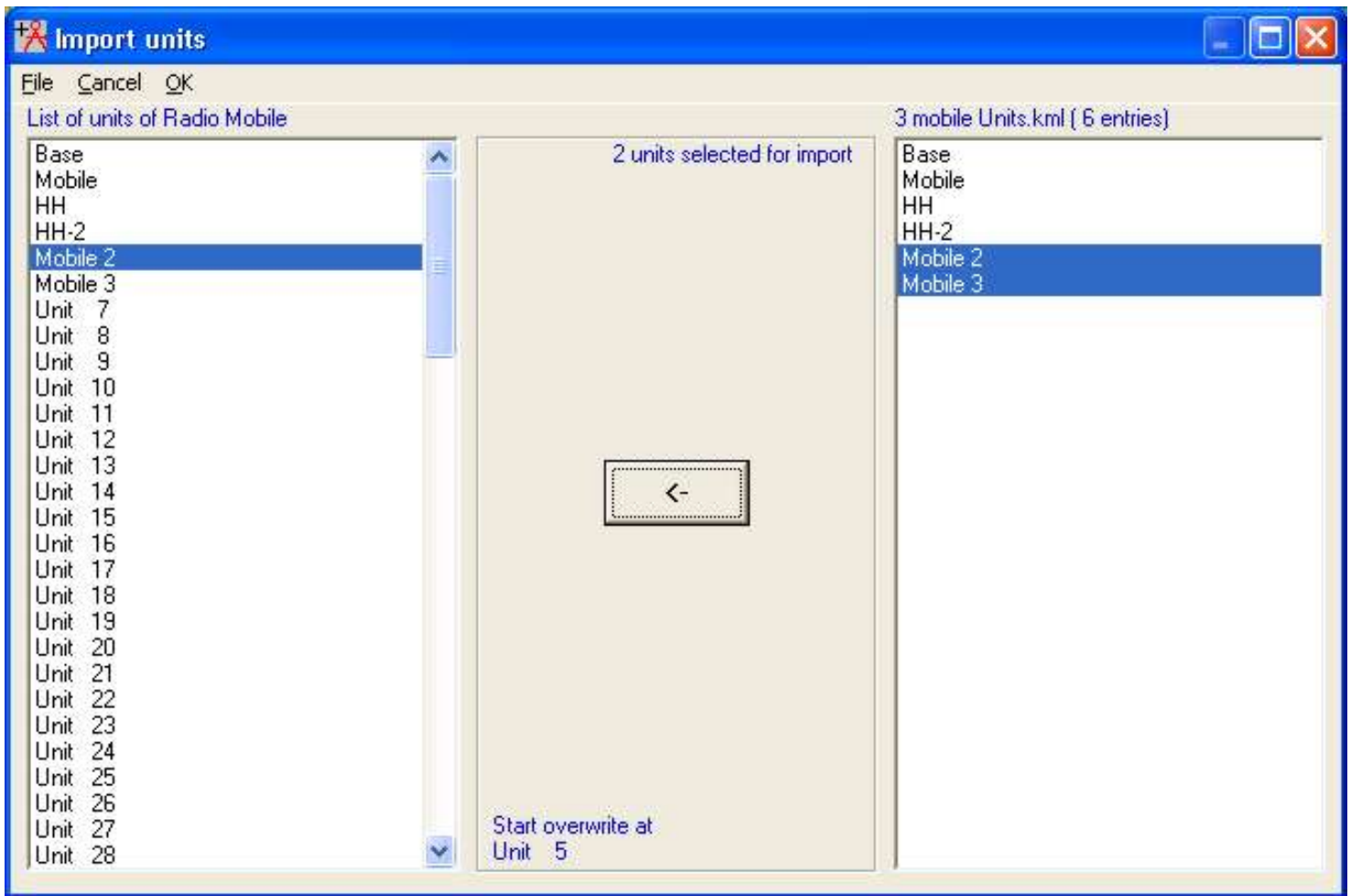
Opening 'Unit Properties' in Radio Mobile and selecting 'Import', produces the 'Import Units' pane:



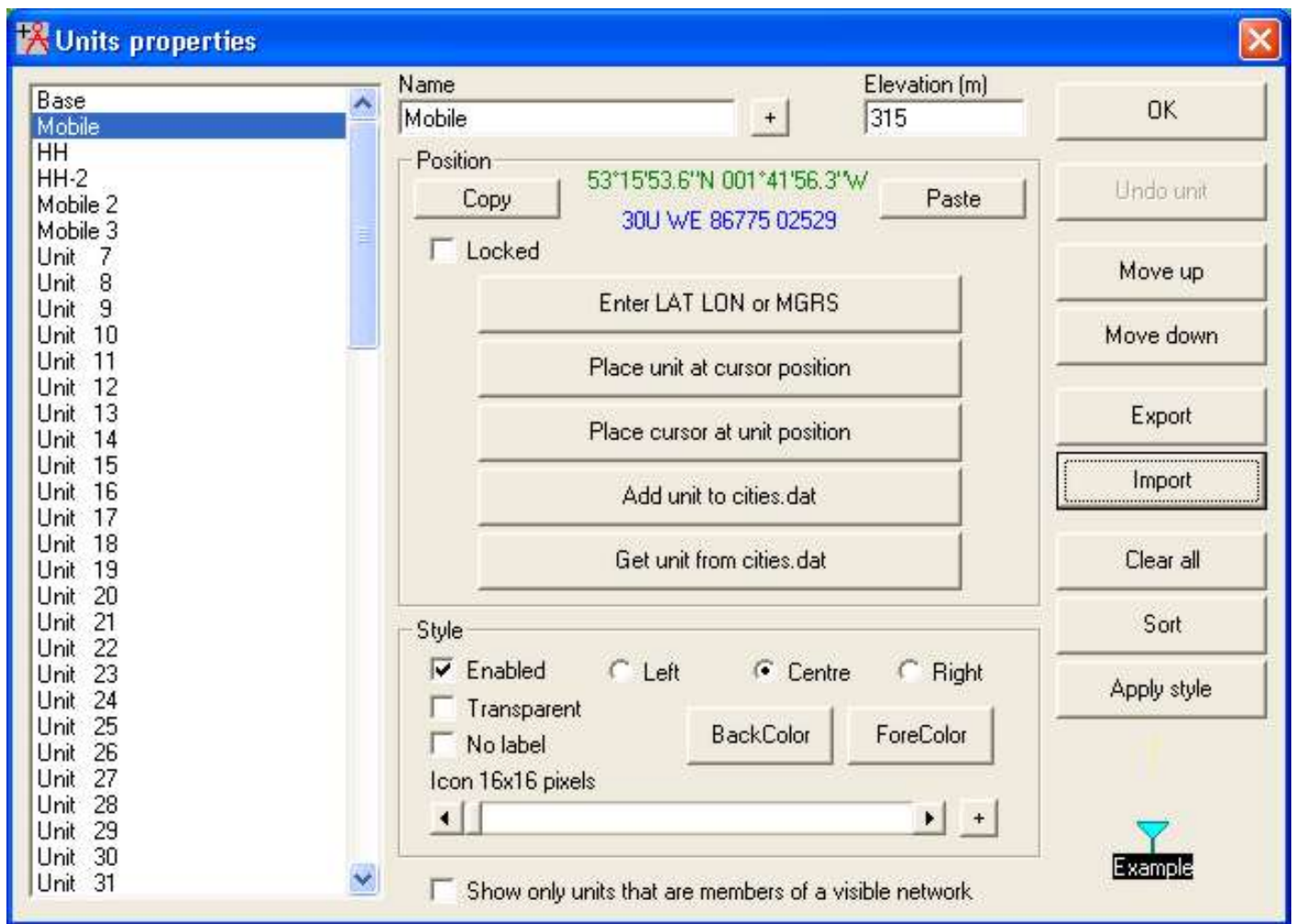
Selecting 'File/Load', and 'type KLM', then navigating to the saved file location produces:



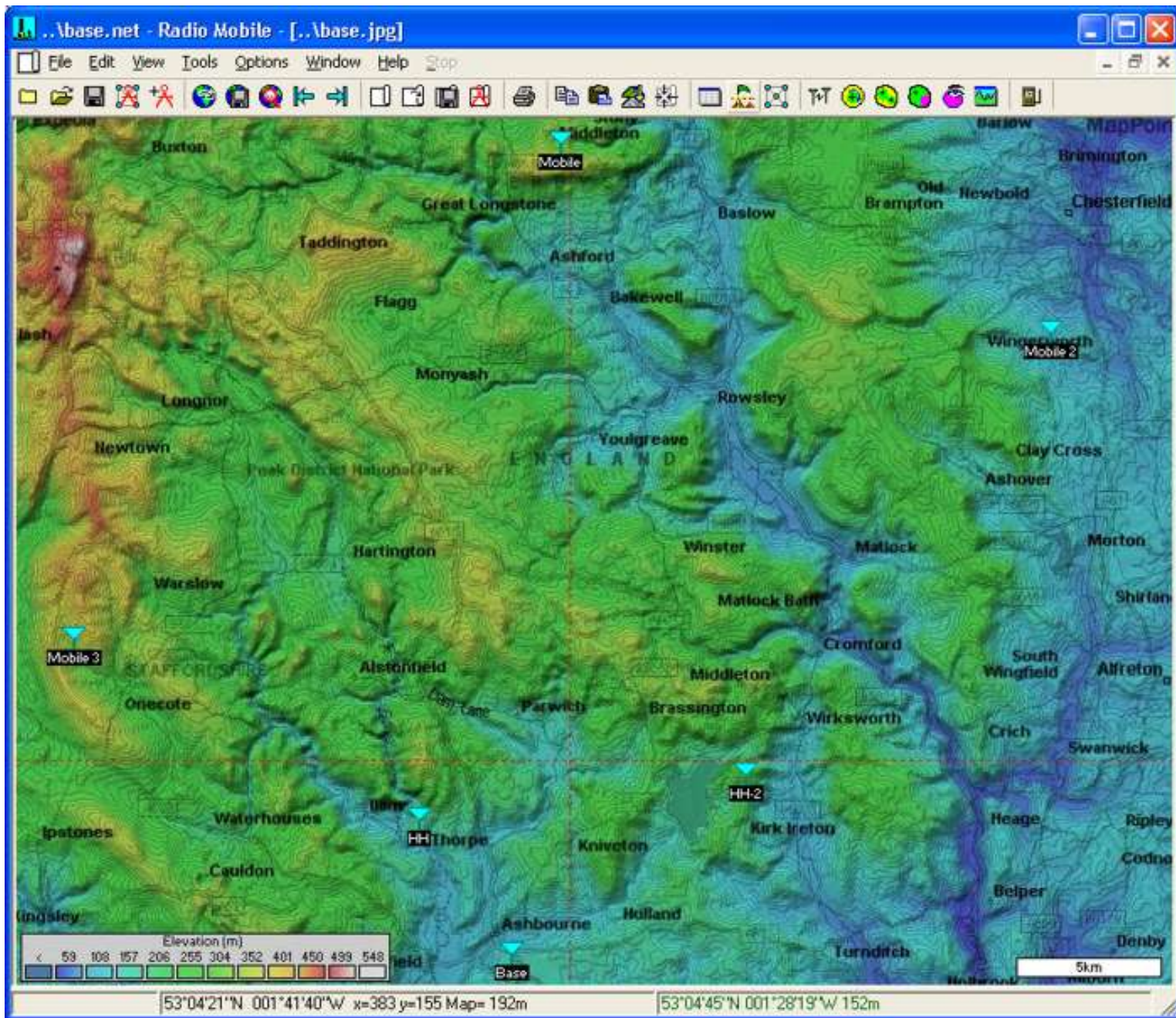
Which when opened shows all the locations and Units from the .kml file. Selecting the first Mobile Unit, it has been overwritten, followed by Mobile 2 and Mobile 3 which have overwritten the unused Units 5 and 6.



A click on 'OK' then closes this pane to show the new Units on the Unit Properties pane:



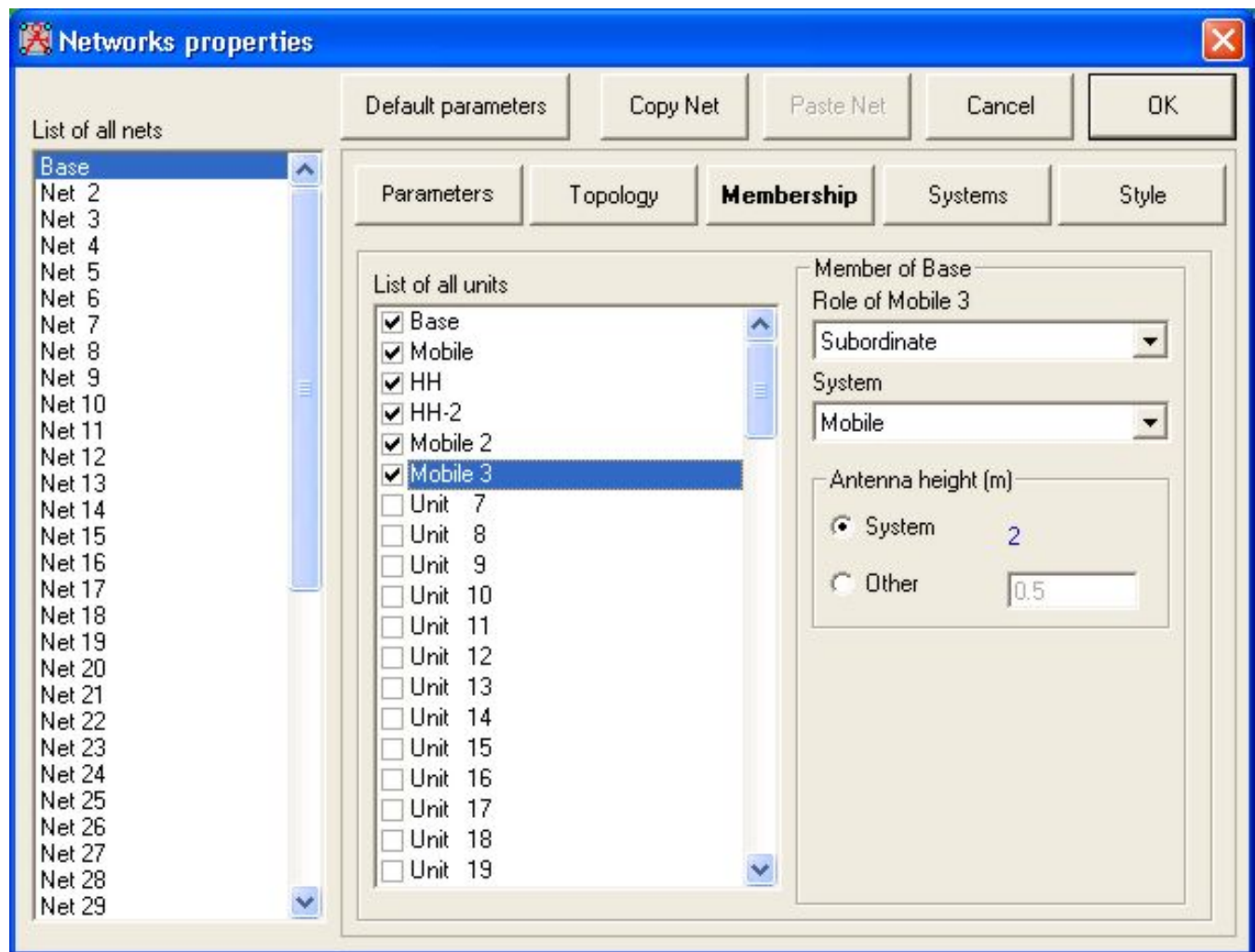
Closing the Unit Properties pane with a click on 'OK', then shows the Base Network with the three Mobile Units at their required locations:



The Units are now placed at their required locations, but they have to have a Radio Operating **System** allocated to each of them before they can be utilised in a Network.

Opening 'File/Network Properties' to access the pane below, shows that the Mobile Units have been given a Subordinate Role and allocated to the 'Mobile' System settings.

But don't forget that Units have to be enabled in **both Network Properties** and **Unit Properties** to show up in a Network.



It is also possible to Export Pictures generated by Radio Mobile into Google Earth

to find out how visit [▶ Importing Pictures](#)

Notes:

1) An existing Network may be modified by using the 'Clear all' button to remove all its existing Units - then importing new Units from a text or kml file. This procedure has the advantage of retaining the Systems and Parameters of the Network to be utilised in the new network, but all Units have to be allocated an Operating **'System'** before they can be used. Don't forget to save the new network **under another name**, or the original one will be overwritten.

2) Starting with 'File/New Network', will clear all information from memory and produce a blank Radio Mobile pane without a map. Opening 'Unit Properties' will then enable you to import Units as above. Next, open 'Edit/Fit map to Units' which produces the Map Properties pane where the actual size of the map in pixels can be selected, followed by 'Extract'. This will produce an elevation map covering the Unit area and display the Units. The 'Network Properties' pane will then have to be accessed to select the required Radio Network Parameters, Frequencies and Systems to be used, then allocate the Units to their required Systems.

- ▶ Quick Start
- ▶ Base Network Settings
- ▶ Once you get Going
- ▶ Radio Link
- ▶ Radio Coverage
- ▶ Route Radio Coverage
- ▶ Split Route Coverage
- ▶ Best Sites - Network
- ▶ Best Sites - Waypoints
- ▶ Changing Location
- ▶ Merging Pictures
- ▶ Antenna Alignment
- ▶ Object Editor
- ▶ Fox Hunt
- ▶ Importing Pictures
- ▶ Export/Import Units
- ▶ Large Maps
- ▶ Antenna Plots
- ▶ Antenna Viewer
- ▶ Land Cover
- ▶ Visual Coverage
- ▶ Network Style
- ▶ How to...
- ▶ RM Downloads
- ▶ RM Contents

[*This page is available in .pdf format here*](#)

Please keep checking back for updates/additions.

[*Top of page*](#)

© Copyright G3TVU

9th June 2008