

# Once you get going

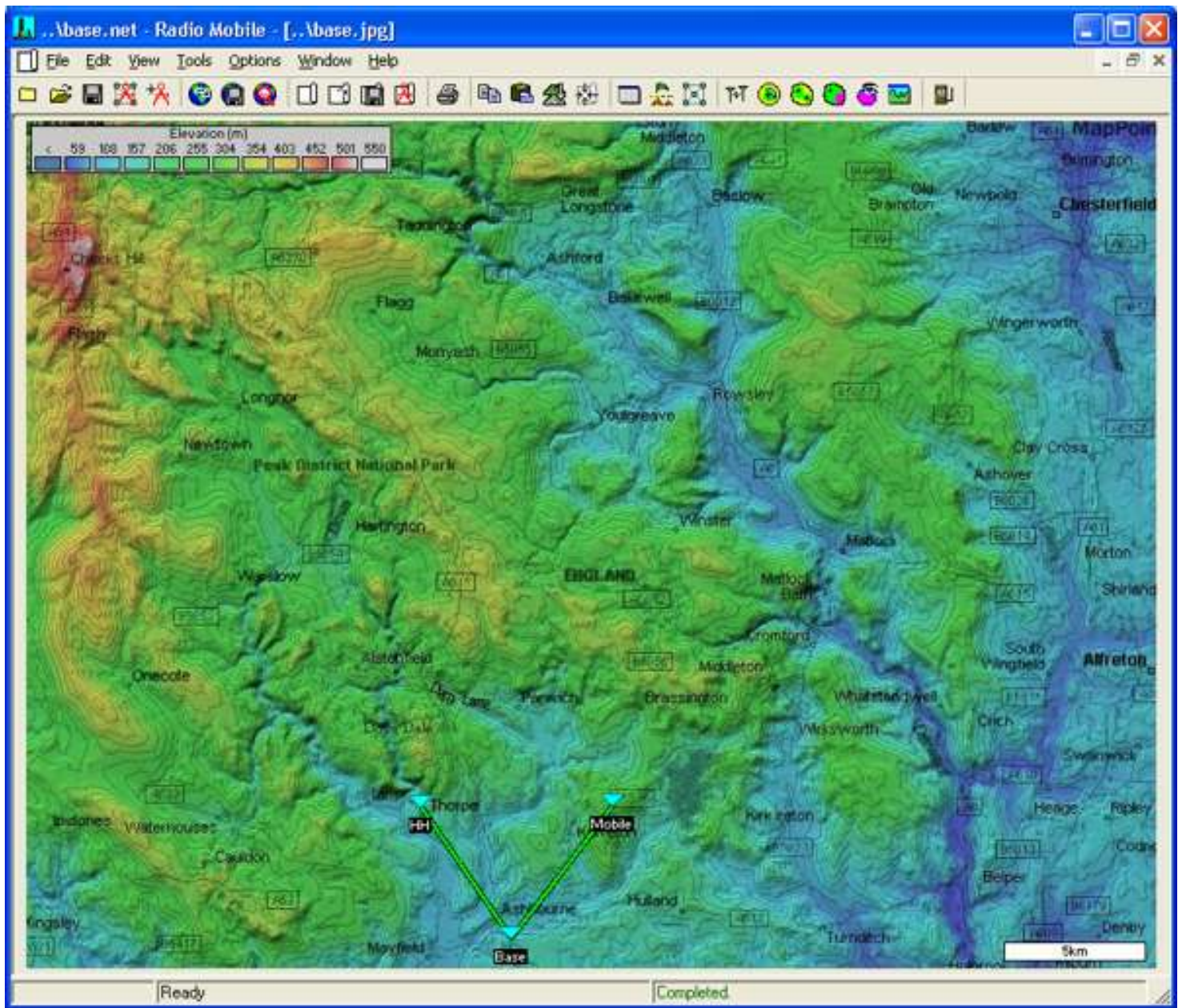

I can be contacted at E-mail address: - **web@g3tvu.co.uk**

Now you have generated the working '**Base Network**', there are a great number of facilities available to you within the program which can be explored. This is a starting point with Creating, placing, moving and adding extra Units.

## Creating and placing Extra Units:

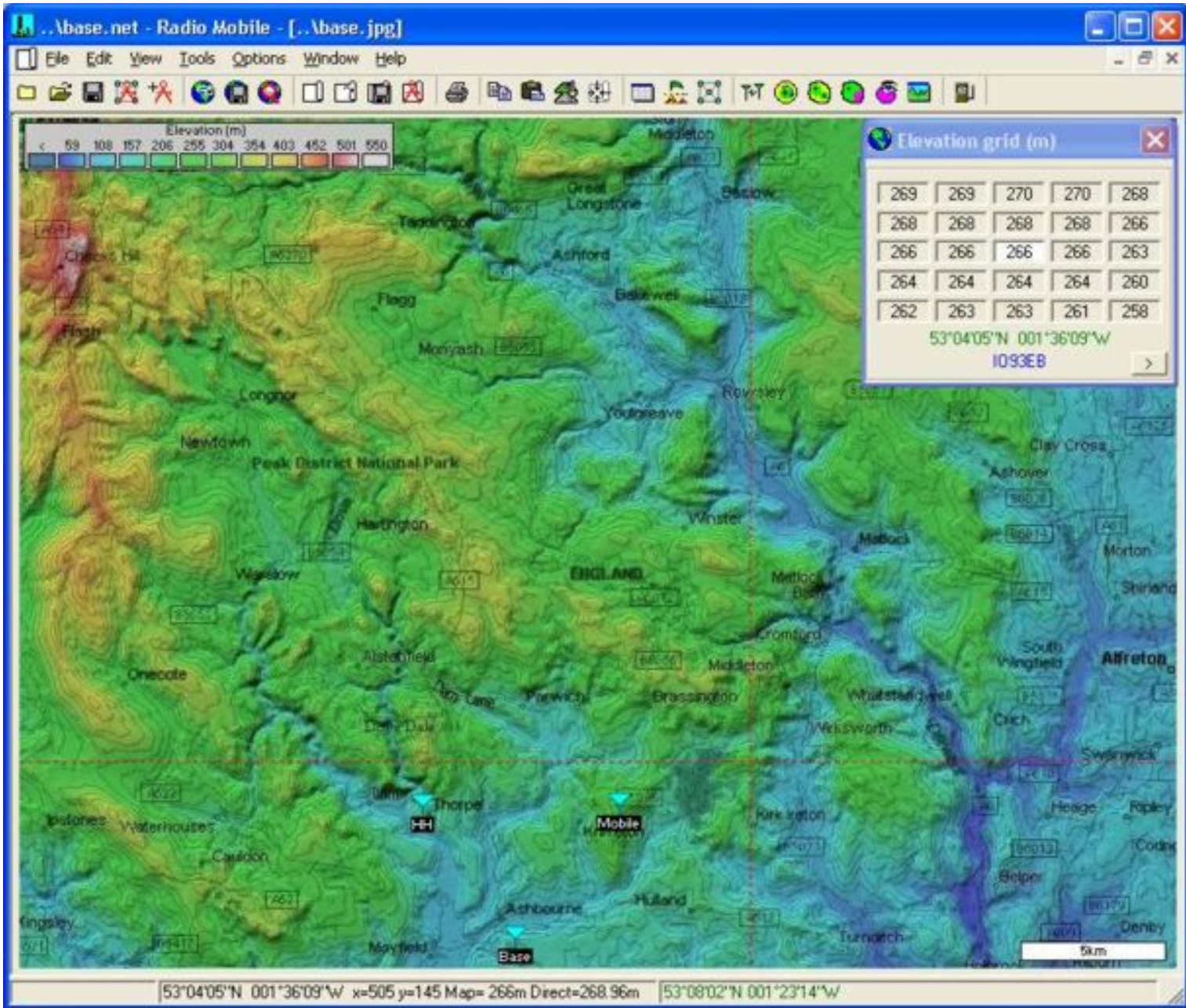
*This is the basic map screen obtained so far from my 'Base Network':*

Once you get going

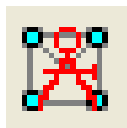


*A left click on the map will produce a red cross wire cursor at the pointer position and an elevation grid showing the height profile around the cursor position. The cursor can be moved by using the keyboard direction arrow buttons or by clicking grid squares in the elevation grid window. This is the position where the new Unit will be placed.*

Once you get going

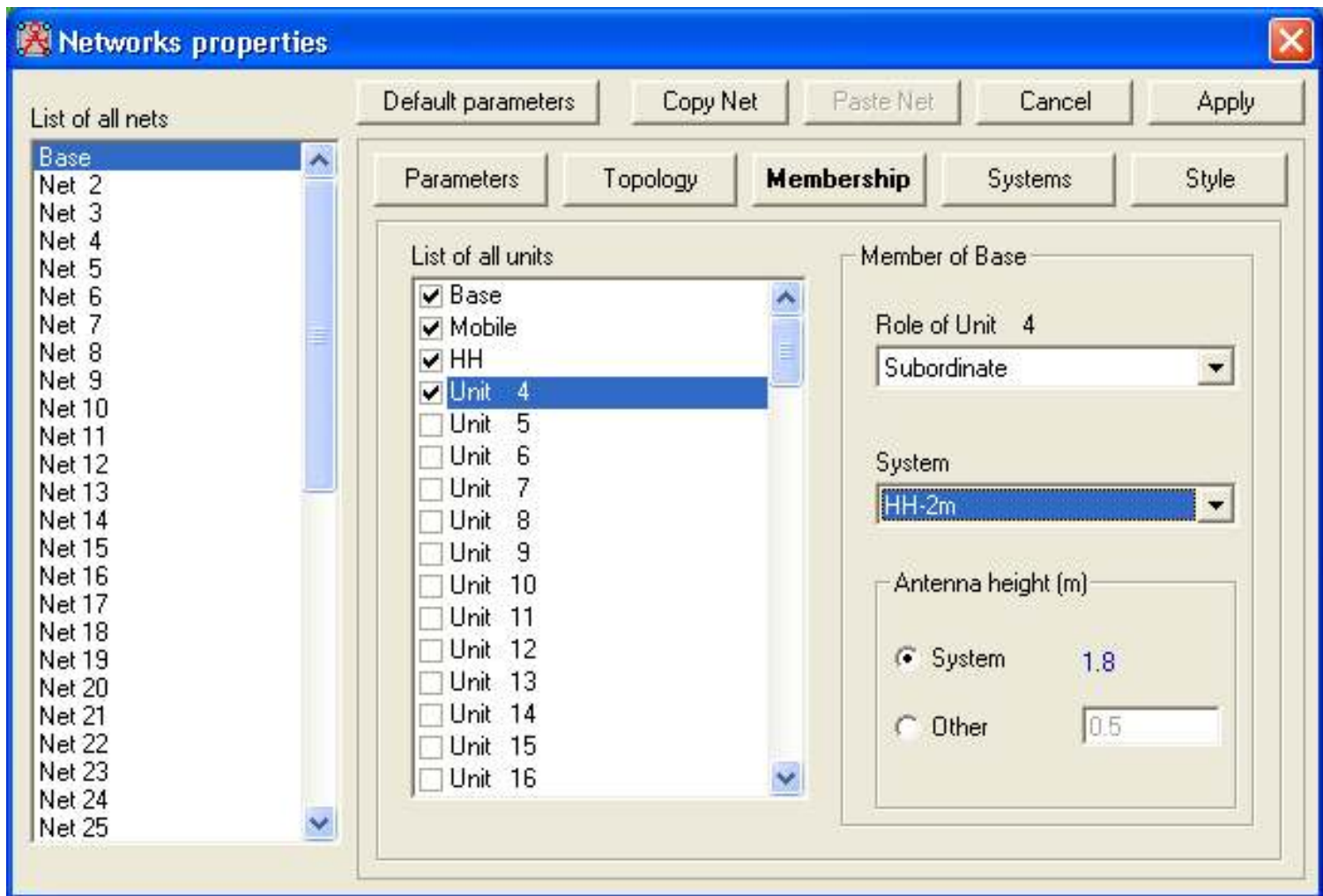


If you then open **Network Properties** from File/Network Properties



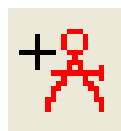
- or click the icon above the map -

and select **'Membership'** this pane will open.

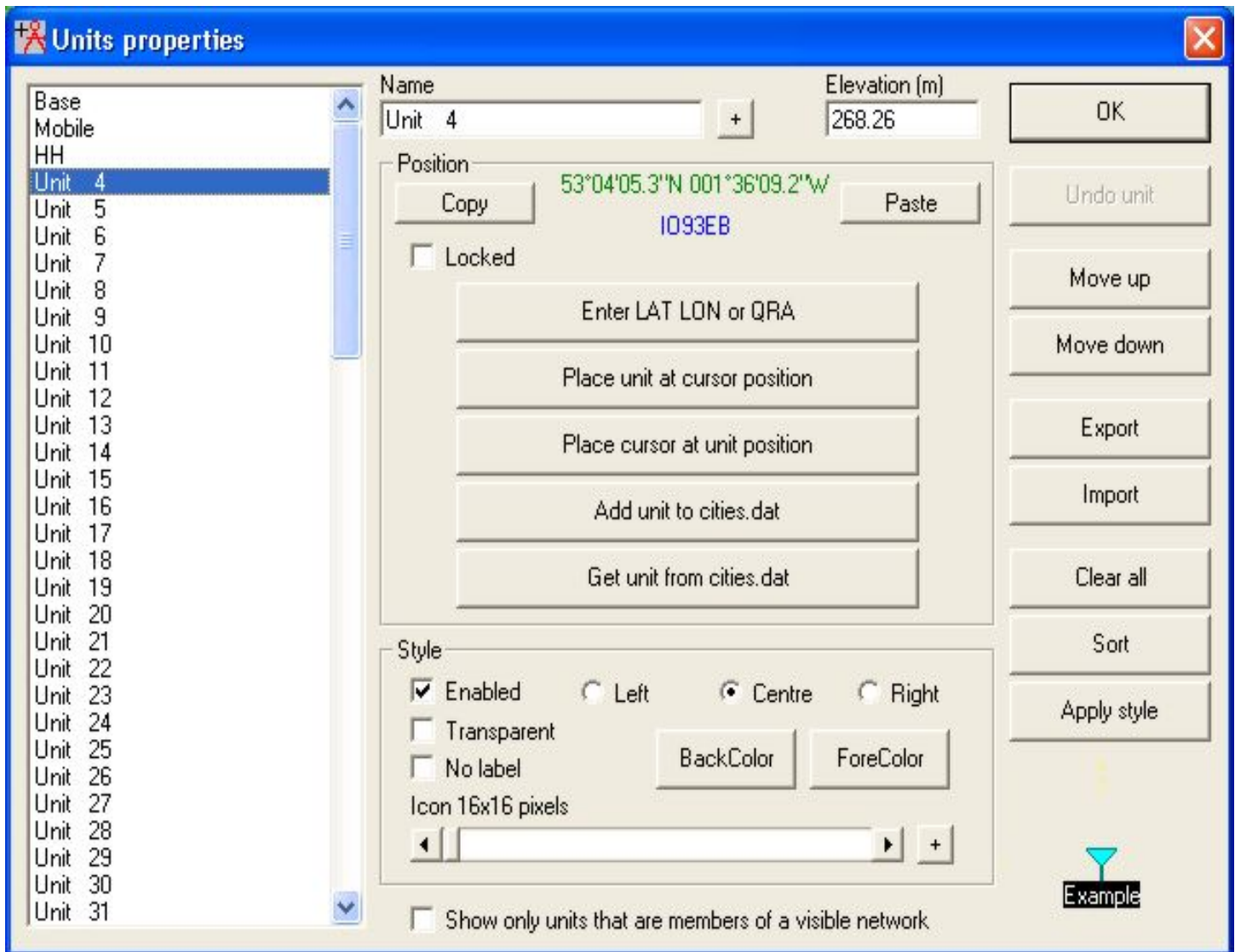


Select Unit 4 and allocate it to the HH-2m System as a subordinate, second, hand held unit. Then click 'Apply' to close the window and open the **Unit Properties** pane from **File/Unit Properties**,

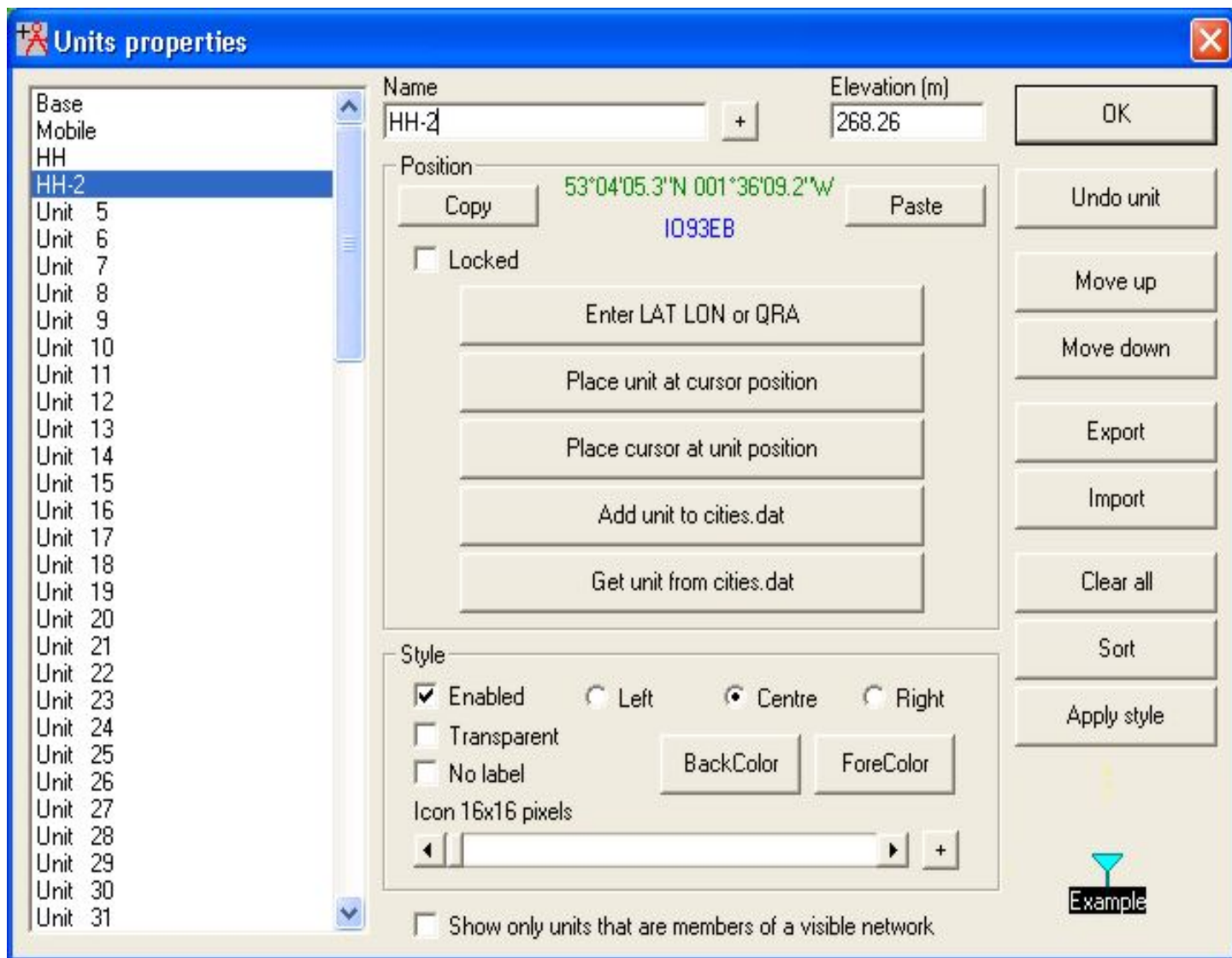
or by a click on the



icon.



Select Unit 4, and a click on **'Place Unit at cursor position'** will place the Unit at the elevation and location of the cursor. Unit 4 can then be renamed to HH-2 to define it on the map as below. Then click **'Apply'** to close the pane.



**Note** that a Unit has to be enabled in **both** '**Network Properties**' and '**Unit Properties**' to be visible on a map!

## Moving Units

To quickly move any Unit on the map area, first left-click where you wish the Unit to be placed to generate the red crosswire cursor, followed by a right-click on the Unit. You will then be prompted as to if you wish to move the Unit to the Cursor position. Alternately, opening Unit Properties as above enables any Unit to be selected and its location entered as Lat/Long or QRA locator.

Click here for the [▶ Radio Link](#) window information to obtain a path profile and link performance,

and here to find how to perform a [▶ Radio Coverage](#) plot.

**Wish to change the Map Location to your own?** See [▶ Changing Location](#)

[\*This page is available in .pdf format here\*](#)

- [▶ Quick Start](#)
- [▶ Base Network Settings](#)
- [▶ Once you get Going](#)
- [▶ Radio Link](#)
- [▶ Radio Coverage](#)
- [▶ Route Radio Coverage](#)
- [▶ Split Route Coverage](#)
- [▶ Best Sites - Network](#)
- [▶ Best Sites - Waypoints](#)
- [▶ Changing Location](#)
- [▶ Merging Pictures](#)
- [▶ Antenna Alignment](#)
- [▶ Object Editor](#)
- [▶ Fox Hunt](#)
- [▶ Importing Pictures](#)
- [▶ Export/Import Units](#)
- [▶ Large Maps](#)
- [▶ Antenna Plots](#)
- [▶ Antenna Viewer](#)
- [▶ Land Cover](#)
- [▶ Visual Coverage](#)
- [▶ Network Style](#)
- [▶ How to...](#)

▶ RM Downloads

▶ RM Contents

*Please keep checking back for updates/additions.*

[Top of Page](#)

© Copyright G3TVU

22nd August 2008