

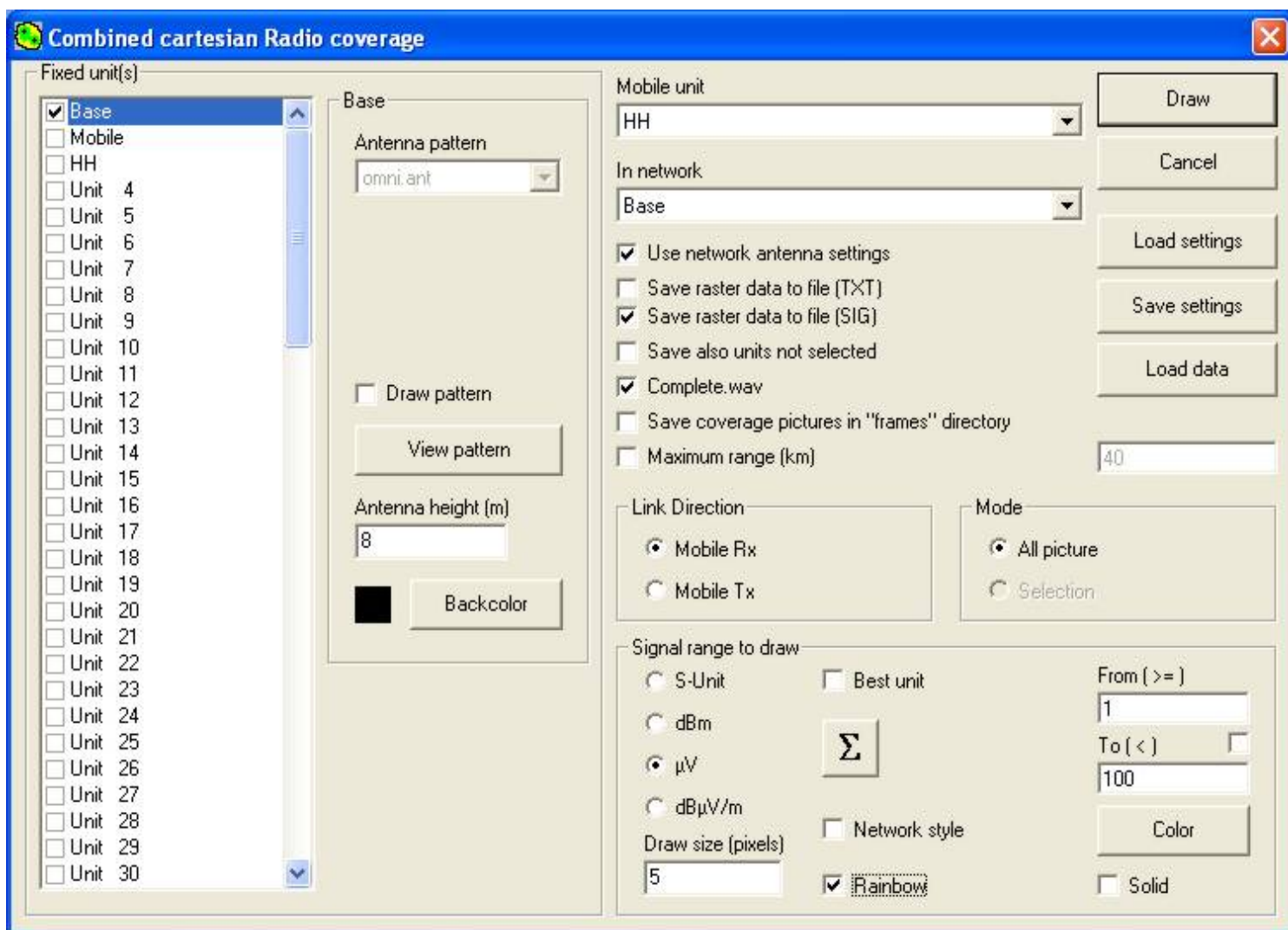
Cartesian plot pane



I can be contacted at E-mail address: - web@g3tvu.co.uk

This page gives a description of all the functions available from:



The Combined Cartesian Radio Coverage setup pane



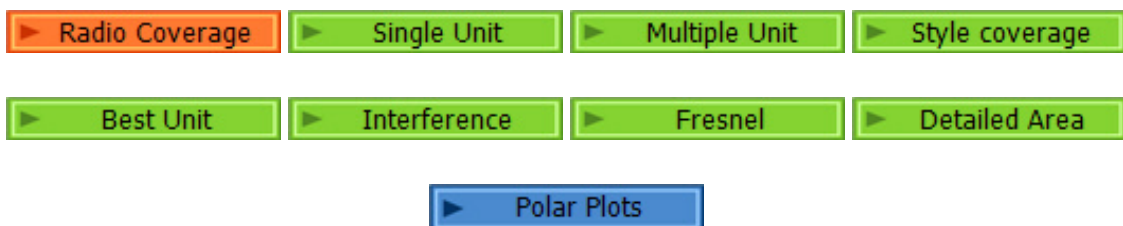
Area	Usage

Fixed Units	<p>In this area the source Units for a plot are selected using the check boxes. A single Unit or multiple Units can be defined dependent on the form of plot required.</p>
Base	<p>This area remains blank until a mobile (moving) unit and Network are selected</p> <p>When a Unit is highlighted - as with the Base Unit above - its antenna pattern is 'Greyed out' showing that the Network Antenna settings have been selected.</p> <p>The title indicates the highlighted Unit. Its antenna pattern is shown with a check box to enable a small antenna pattern to be drawn round the unit location during the plot.</p> <p>A 'View Pattern' button opens the Antenna Pattern Viewer to enable examination of the antenna radiation characteristics.</p> <p>Antenna height can be changed from the Network settings if required, and the Unit label Background colour selected for use in 'Best Unit' plots.</p>
Mobile Unit	<p>The defined 'mobile' unit is the unit whose characteristics are moved round the plot whilst calculating signal parameters. The mobile and all fixed Units have to be members of the selected Network.</p>
Draw	<p>Initiates the plot.</p>
Cancel	<p>Cancels the plot.</p>
Load settings	<p>Opens a browser pane to load previously saved Coverage (cov) file.</p>
Save settings	<p>Opens a browser pane to save the current settings in a Coverage (cov) file.</p>
Load data	<p>Opens a browser pane to load a <code>***.txt</code> data file from previous Best Unit plot.</p>
Use Network antenna settings	<p>With this box checked, the antenna type will be greyed out as shown above, and cannot be changed. Removing the check from the box enables an alternative antenna to be selected. With a gain antenna the Azimuth and Elevation of it can be specified.</p>

<p>Save raster data to file (TXT)</p>	<p>Checking this box enables the data generated by the plot to be saved to a specified location with your own name.</p>
<p>Save raster data to file (SIG)</p> 	<p>Checking this box enables the generation of a ***.sig file during the plotting process. The 'sig' file contains the signal level data calculated for the plot, and produces a signal level readout at the cursor position in the lower data area. This file will be saved with the plot picture for later use if required.</p>
<p>Save also Units not selected</p>	<p>A check in this box enables all Units in the Network to be used during the plot, regardless of whether they are selected or not.</p>
<p>Complete.wav</p>	<p>Checking this box enables a tone to be sounded when a plot is completed. This is useful where a small pixel area plot is performed using a number of Units which can take a considerable time to complete.</p>
<p>Save coverage pictures in frames directory</p>	<p>Where a Best Unit plot is performed, each Unit is used to perform a separate coverage plot, and then the final plot uses this set of data to calculate the Best Unit at each location which is then displayed. Checking this box saves the individual coverage plots to a selected location from which they can be accessed later as required. Similarly, with a single fixed Unit the plot is saved.</p>
<p>Maximum range Km</p>	<p>By checking this box the maximum radial range of the plot can be specified in Km.</p>
<p>Link direction</p>	<p>The Radio Link direction can be specified as 'mobile receive' or 'mobile transmit' for the plot, where the 'mobile' Unit is the one which has its parameters used as the moving Tx or Rx unit.</p>
<p>Mode</p>	<p>Selection of the whole picture or a selected area for the plot if a marquee box is on screen.</p>
<p>Signal range to draw</p>	<p>The units required for the plot from 'S units', dBm, μV or dBμV/m, can be selected. The range of signals to be shown on the plot being from a defined 'From (>=)' minimum value to an automatically generated maximum, or by checking the 'To(<)' box, to a defined maximum value. If the 'To(<)' box is not checked, the maximum value indicates signals > or = to that value.</p>

<p>Draw size (pixels)</p>	<p>A setting of 5 pixels in this box causes the program to calculate coverage for every '5x5' pixel area over the plot area. A setting of 1 pixel square takes 25 times as long to perform than a 5 pixel square plot!</p>
<p>Best Unit</p>	<p>Checking this box, with a number of fixed Units specified, causes the program to perform a coverage plot for each Unit in turn. These plots are then compared, and a final plot showing the Unit which generates the strongest signal at each location is plotted. The Units are identified on the plot by their label background colour.</p>
<p>Style Coverage</p> 	<p>Checking the 'Network Style' selection box, removes the 'Range to draw' detail, and a plot will be performed using the settings and colours selected on the Network Properties Style pane. The units in a 'SIG', signal level, file can be selected to enable the actual calculated signals at any point on the plot to be displayed.</p>
<p>Σ</p> 	<p>Depressing the Sigma button (Σ) where a number of fixed units are specified, causes the program to perform a coverage plot for each unit in turn, and the sum of all signals are calculated at each location and shown on the final plot.</p>
<p>Rainbow</p>	<p>A check in the Rainbow box will produce a multicoloured display of the signal levels available at each location. The signal levels are defined in the 'Signal range to draw' area. If Rainbow isn't checked, a single colour will be used for the area showing the signal range defined. The colour can be selected by clicking on the 'Color' button. This feature allows multiple plots of different signal level bands to be shown on the plot.</p>
<p>Solid</p>	<p>A check in this box causes any colour plots to be performed with Solid colours - this obscures any background information on the plot.</p>

[This page is available in .pdf format here.](#)



Please keep checking back for updates/additions.

[Top of Page](#)

[Return to Radio Coverage](#)

© Copyright G3TVU

7th May 2009